

Tuff Pumps

Coming Soon:
www.TuffPumps.com

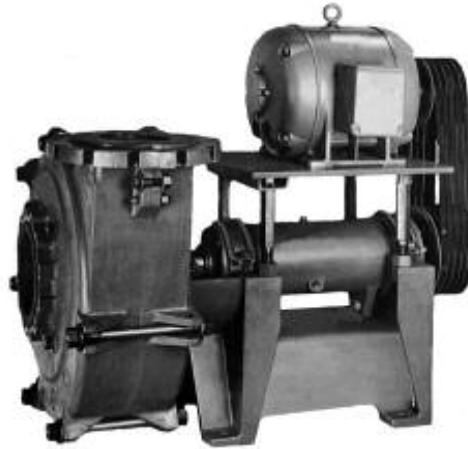
R & RV SERIES

Rubber Lined Slurry Pumps

PUMPING SOLUTIONS TO A WORLD OF INDUSTRY

Tuff Pumps for "tough applications" and few can be tougher than erosive/corrosive and/or abrasive slurries and sludges ~ exactly the type of media **Tuff Pumps** had in mind when it entered into the design and manufacture of centrifugal slurry and sludge handling pumping plant.

Whilst still one of the very few "family owned and run" pump businesses left in the pump industry, **Tuff Pumps** has an extremely comprehensive, effective, high quality, reliable pump range that is backed-up by a very personal pre and after sales service that is second to none.



Tuff Pumps new **R Series** is a horizontal range of *High Performance, Rugged and Reliable Rubber Lined Slurry and Sludge* pumps in 8 standard sizes and numerous material combinations; from standard natural rubber impellers and liners; within ductile iron casings, through synthetic rubbers (such as neoprene and hypalon) and polymers (such as urethane). The **RV Series** is a vertical cantilever version for tank mounting.

Using established criteria, years of experience, and state of the art design and application know-how, **Tuff Pumps** has developed a heavy duty, high performance, reliable and rugged **Rubber Lined Slurry and Sludge** pump range ~ designated as its **R Series** ~ and is successfully applying the range within a wide variety of market sectors and applications; a few of which are specified below:-

Mining & Mineral Processing & Power Generation & Steel:

- Aggregate & Mineral Slurries
- Mineral & Ore Processing
- Cyclone Feed & Under-flow
- Tailings Disposal
- Lime & Clay Slurries
- Dewatering, Washdown & Sluicing
- Medium Density Slurries & Sludges
- Highly Abrasive Solids in Suspension
- Acidic and Alkaline Slurries & Sludges
- Corrosive/Erosive Solids Handling

Industrial Effluents & Liquors:

- All Abrasive Slurries & Sludges
- Abrasive Chemical & Process Liquors
- Abrasive Fibrous Pulp & Solids
- Effluent Treatment
- Erosive & Corrosive Process Liquors

